

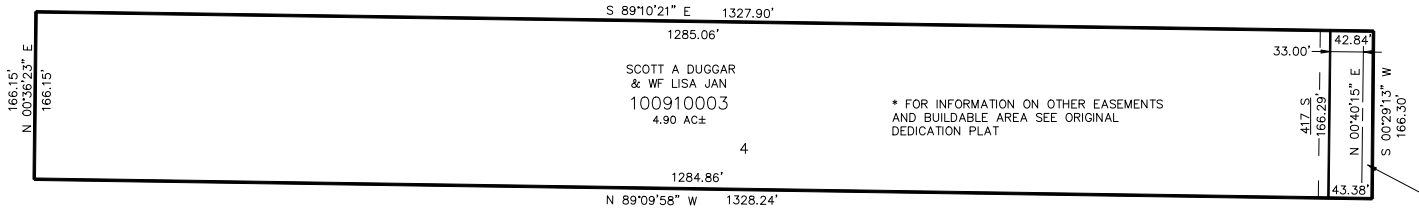
PART OF THE S.W. 1/4, OF SECTION 15, T.6N., R.3W., S.L.B. & M.
CLIFF FLATS SUBDIVISION – PHASE 1

91

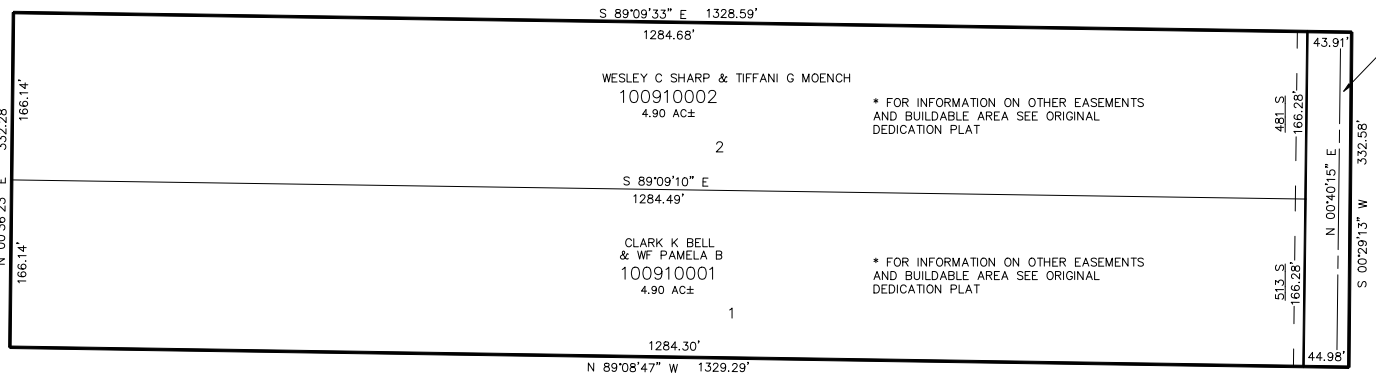
TAXING UNIT: 389

IN WEBER COUNTY
 SCALE 1" = 100'

SEE PAGE 37



SEE PAGE 37



7900 WEST STREET

SEE PAGE 37

SEE PAGE 78

10' UTILITY & DRAINAGE EASEMENTS EACH
 SIDE OF PROPERTY LINES AS INDICATED
 BY DASHED LINES EXCEPT AS OTHERWISE
 SHOWN.

FOR COMPLETE ENG DATA SEE
 ORIGINAL DEDICATION PLAT IN
 BOOK 53, PAGE 85 OF RECORDS.